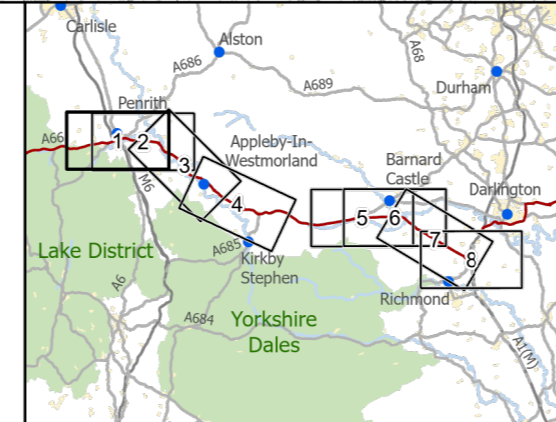


- Existing A66
- Order Limits
- Study Area 3km
- Viewpoint
- Viewpoint (Photomontage)
- Assessed View
- Public Rights of Way
- Areas Theoretically Visible from Existing A66 (HGV 4.7m) (2m DSM)
- Areas Theoretically Newly Visible from Scheme (HGV 4.7m) (2m DSM)



**national highways**

3 Piccadilly Place  
Manchester  
M1 3BN

P02	First Issue	PKELL	CESL	JSIM	AMIT	KWHA
		17/03/22	17/03/22	17/03/22	20/04/22	20/04/22
Revision	Created	Checked	Reviewed	Approved	Authorised	

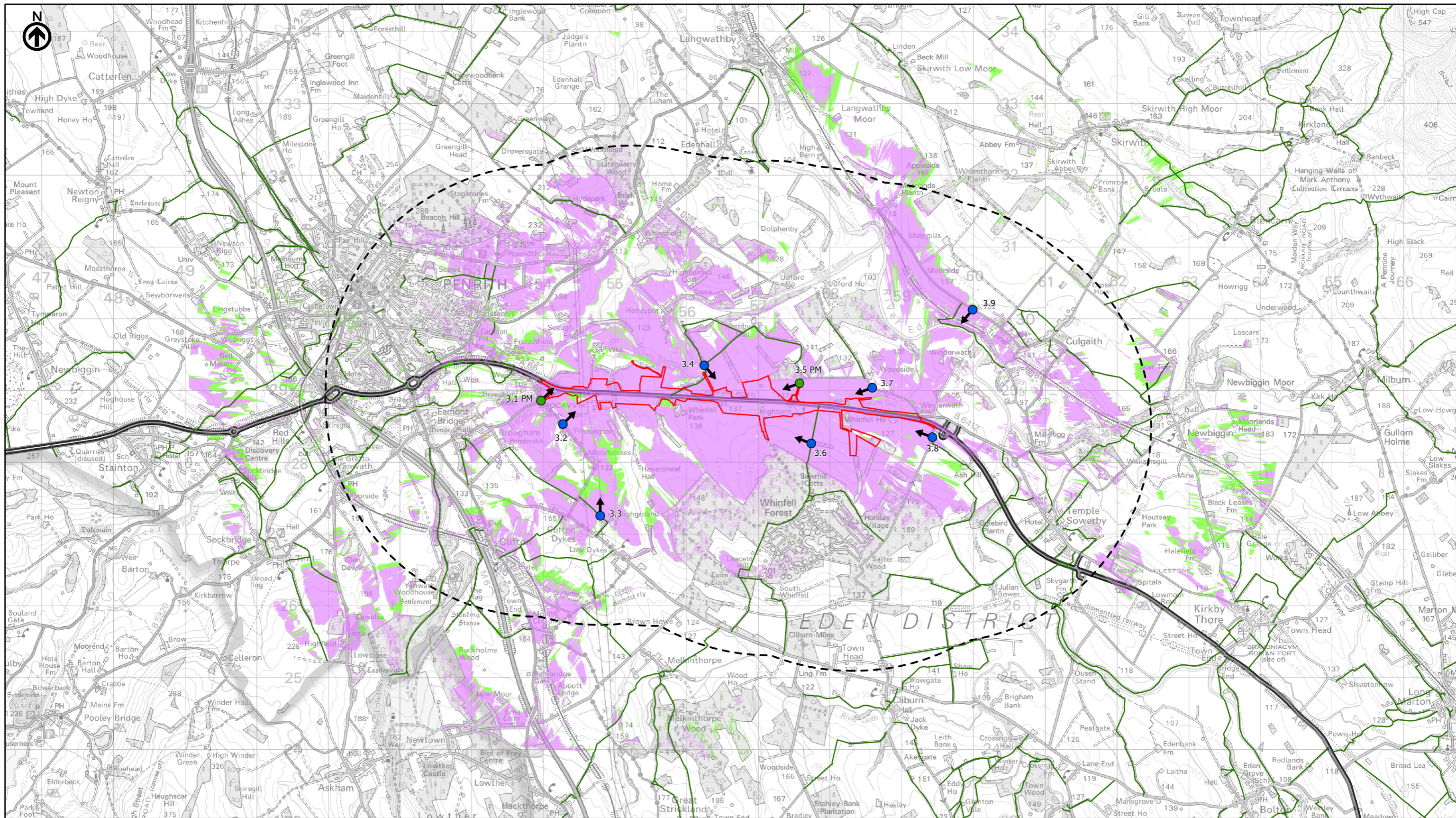
Kilometres

0 2 4

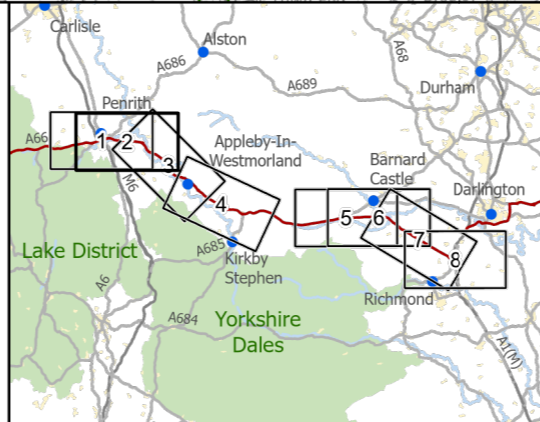
Scale @ A3: 1:50,000 | Project Ref No HE565627 | Stage: Stage 3  
 © Crown copyright and database rights (2022). All rights reserved. OS 100030649.  
 Contains public sector information licensed under the Open Government Licence v3.0.  
 Digital Surface Model - ©Astrium Ltd and Bluesky International Ltd

Project Name <b>A66 Northern Trans-Pennine Project</b>			
Map Title Figure 10.4			
Zone of Theoretical Visibility (ZTV 3km) and Viewpoints			
Scheme: 0102, M6 Junction 40 to Kemplay Bank			
Sheet 1 of 8			
Map Number Project	Originator	Volume	
HE565627	AMY	ELS	
S00	- MP - LL	- 006072	
Location	Type	Role	Number
Suitability S4	Suitability Description FIT FOR STAGE APPROVAL	Revision P02	





- Existing A66
- Order Limits
- Study Area 3km
- Viewpoint
- Viewpoint (Photomontage)
- Assessed View
- Public Rights of Way
- Areas Theoretically Visible from Existing A66 (HGV 4.7m) (2m DSM)
- Areas Theoretically Newly Visible from Scheme (HGV 4.7m) (2m DSM)



**national highways**

3 Piccadilly Place  
Manchester  
M1 3BN

P02	First Issue	CESL	JSIM	AMIT	KWHA
	17/03/22	17/03/22	17/03/22	20/04/22	20/04/22
Revision	Created	Checked	Reviewed	Approved	Authorised

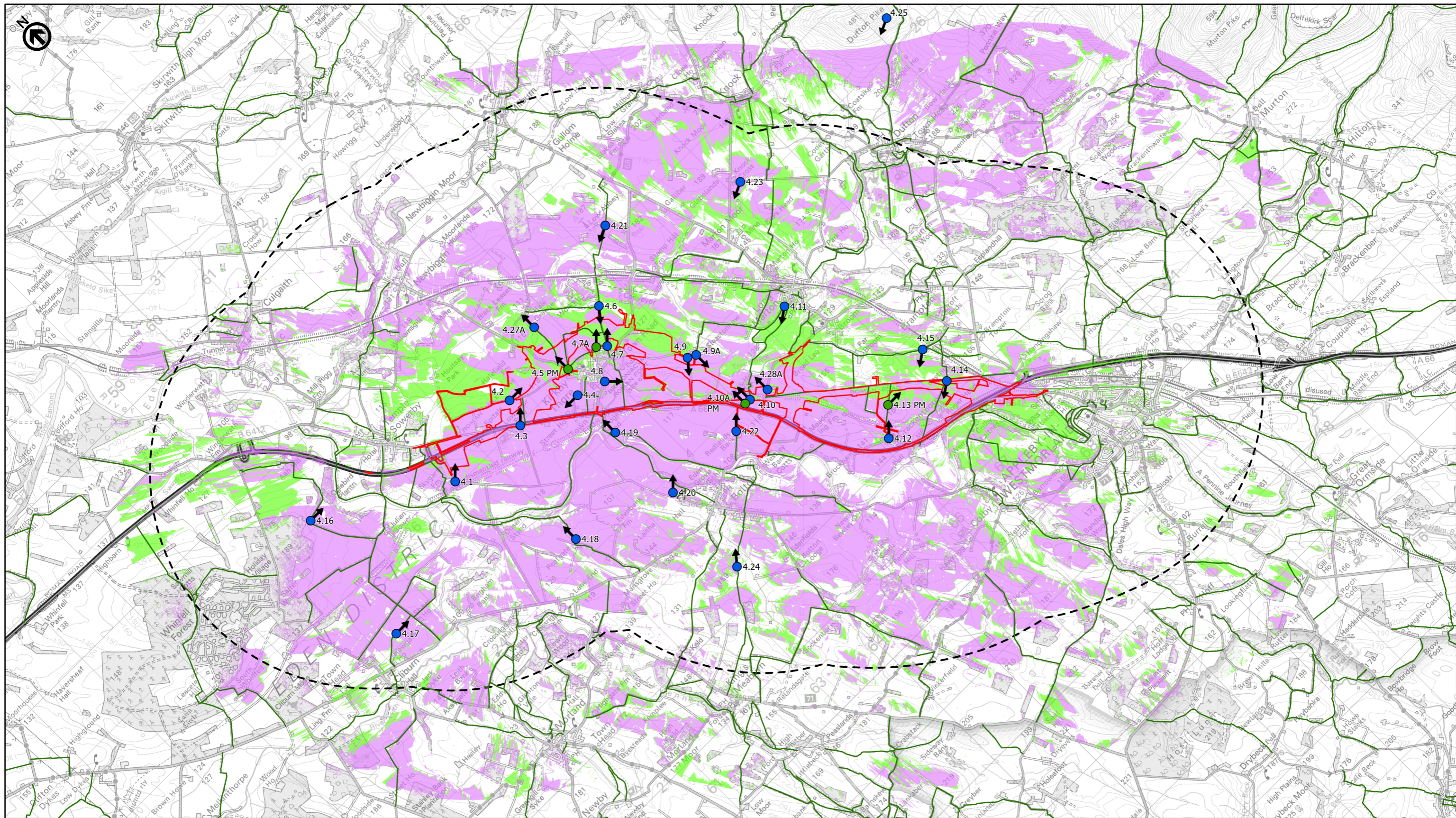
Kilometres

0 2 4

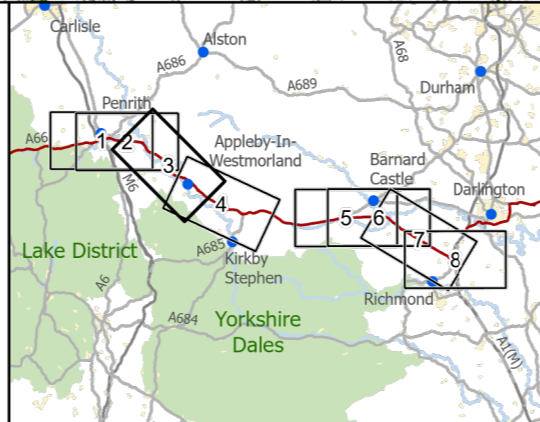
Scale @ A3: 1:50,000 | Project Ref No HE565627 | Stage: Stage 3  
© Crown copyright and database rights (2022). All rights reserved. OS 100030649.  
Contains public sector information licensed under the Open Government Licence v3.0.  
Digital Surface Model - ©Astrium Ltd and Bluesky International Ltd

Project Name <b>A66 Northern Trans-Pennine Project</b>			
Map Title Figure 10.4 Zone of Theoretical Visibility (ZTV 3km) and Viewpoints Scheme: 03, Penrith to Temple Sowerby Sheet 2 of 8			
Map Number Project	Originator	Volume	
HE565627	AMY	ELS	
S00	MP	LL	006073
Location	Type	Role	Number
Suitability S4	Suitability Description FIT FOR STAGE APPROVAL	Revision P02	





- Existing A66
- Order Limits
- Study Area 3km
- Viewpoint
- Viewpoint (Photomontage)
- Assessed View
- Public Rights of Way
- Areas Theoretically Visible from Existing A66 (HGV 4.7m) (2m DSM)
- Areas Theoretically Newly Visible from Scheme (HGV 4.7m) (2m DSM)



**national highways** 3 Piccadilly Place  
Manchester M1 3BN

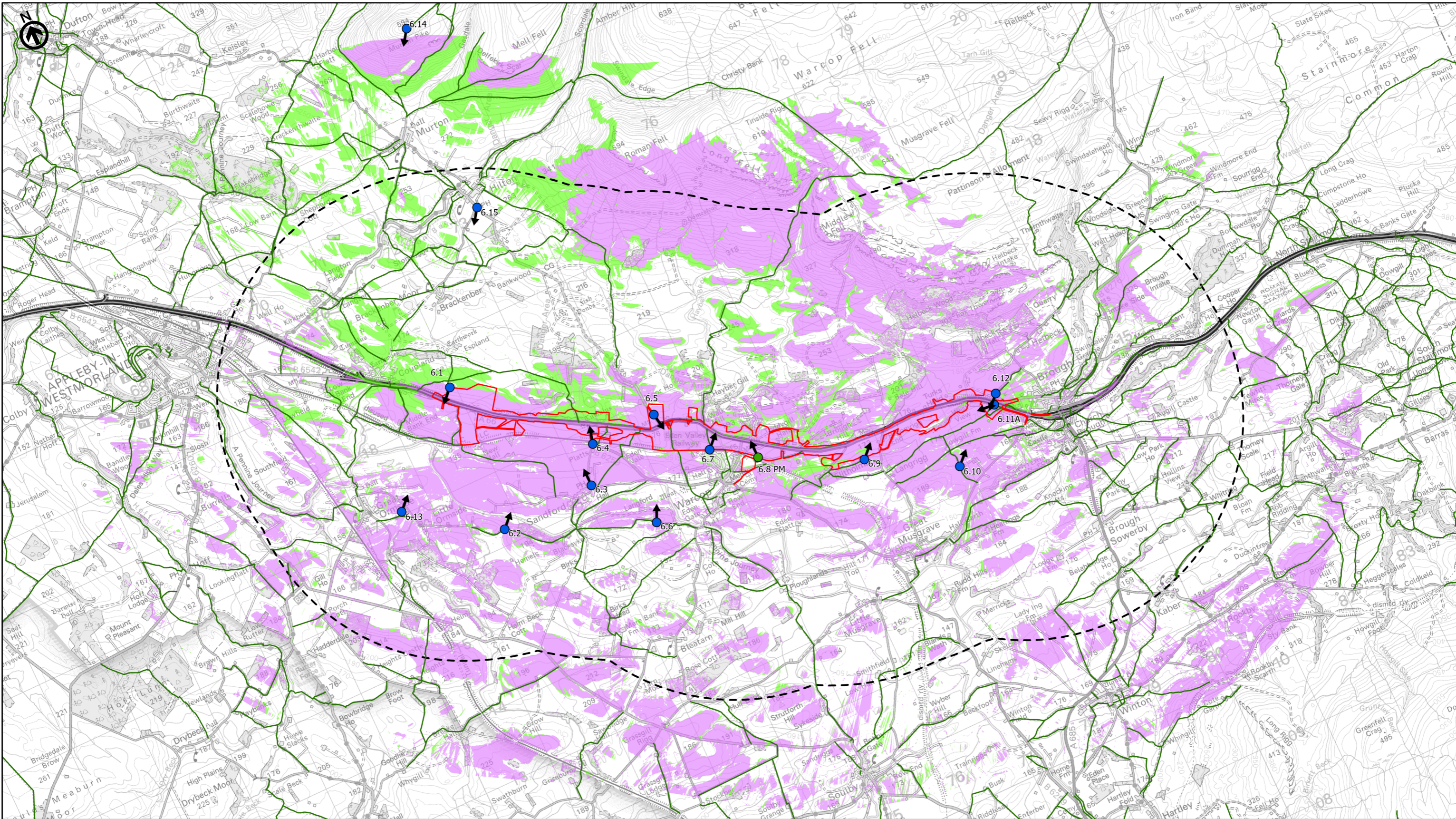
P02	First Issue	CESL	JSIM	AMIT	KWHA
	17/03/22	17/03/22	17/03/22	20/04/22	20/04/22
Revision	Created	Checked	Reviewed	Approved	Authorised

Kilometres  
0 2 4

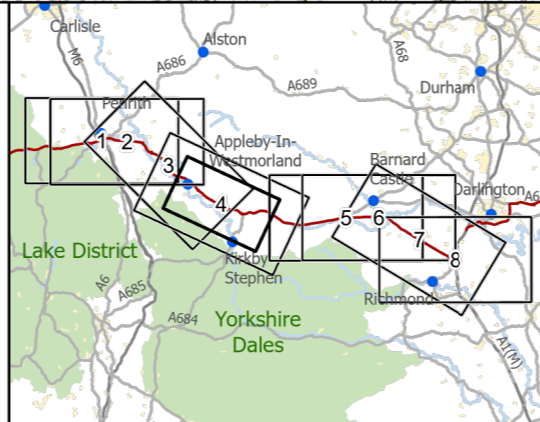
Scale @ A3: 1:50,000 | Project Ref No HE565627 | Stage: Stage 3  
© Crown copyright and database rights (2022). All rights reserved. OS 100030649.  
Contains public sector information licensed under the Open Government Licence v3.0.  
Digital Surface Model - ©Astrium Ltd and Bluesky International Ltd

Project Name <b>A66 Northern Trans-Pennine Project</b>			
Map Title Figure 10.4			
Zone of Theoretical Visibility (ZTV 3km) and Viewpoints			
Scheme: 0405, Temple Sowerby to Appleby			
Sheet 3 of 8			
Map Number	Project	Originator	Volume
HE565627	-	AMY	-
S00	-	MP	LL
Location	Type	Role	Number
S4	FIT FOR STAGE APPROVAL		P02





— Existing A66  
 — Order Limits  
 - - - Study Area 3km  
 ↑ Viewpoint  
 ↑ Viewpoint (Photomontage)  
 ↑ Assessed View  
 — Public Rights of Way  
 Areas Theoretically Visible from Existing A66 (HGV 4.7m) (2m DSM)  
 Areas Theoretically Newly Visible from Scheme (HGV 4.7m) (2m DSM)



**national highways**  
 3 Piccadilly Place  
 Manchester  
 M1 3BN

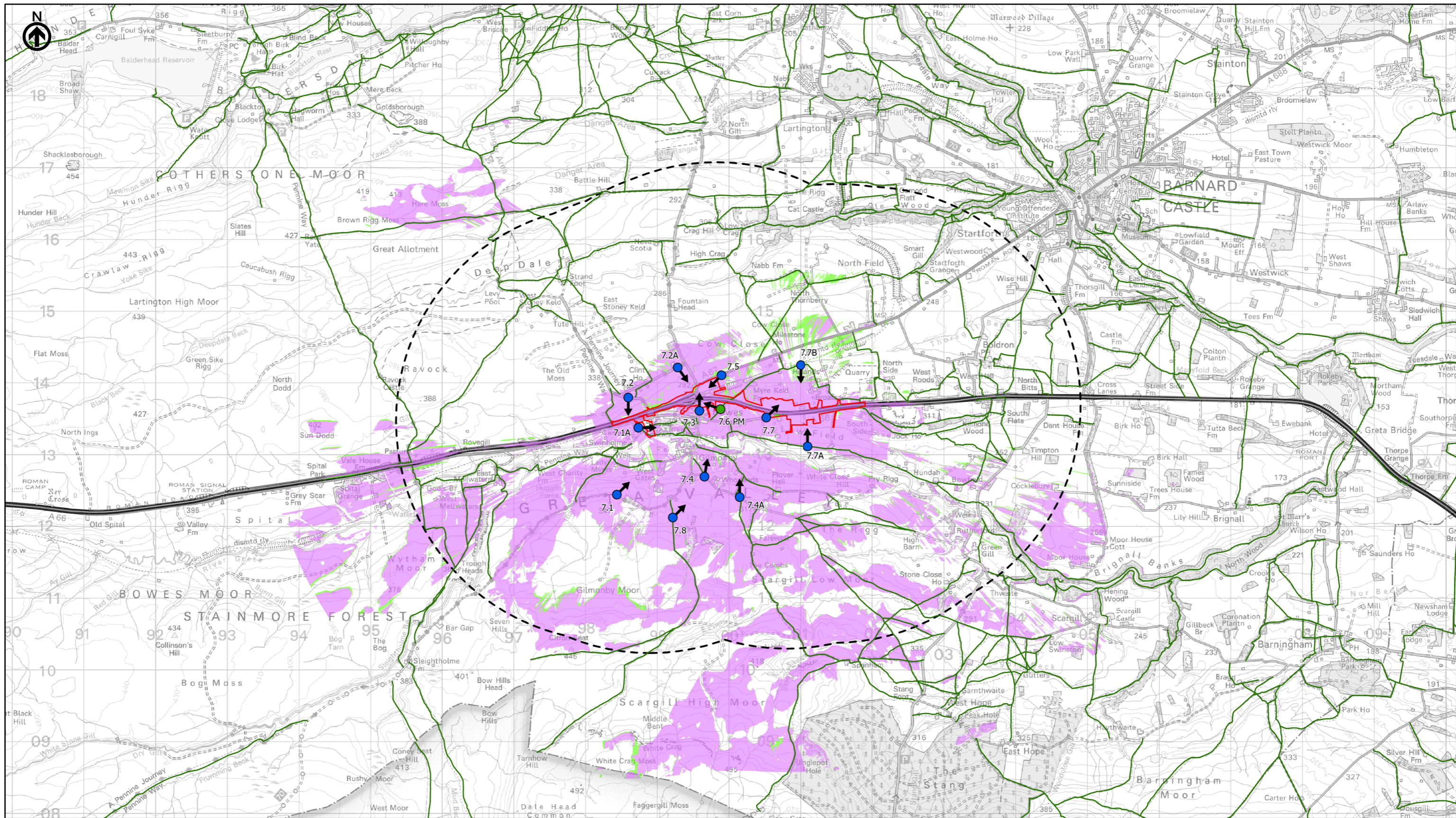
P03	Second Issue: Revised Order Limits				
	PKELL	CESL	JSIM	AWAR	KWHA
	19/04/23	19/04/23	19/04/23	16/05/23	16/05/23
Revision	Created	Checked	Reviewed	Approved	Authorised

Scale @ A3: 1:50,000 | Project Ref No HE565627 | Stage: Stage 3  
 © Crown copyright and database rights (2023). All rights reserved. OS 100030649.  
 Contains public sector information licensed under the Open Government Licence v3.0.  
 Digital Surface Model - ©Astrium Ltd and Bluesky International Ltd

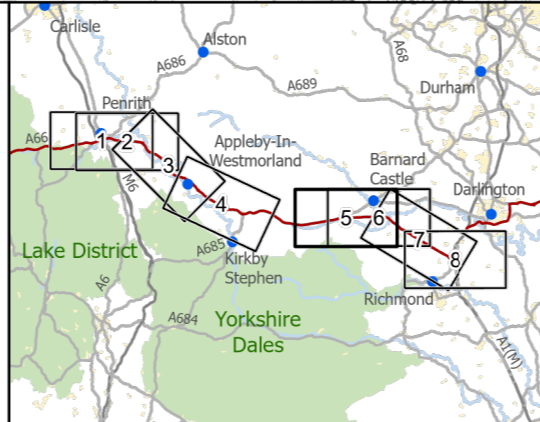
Project Name  
**A66 Northern Trans-Pennine Project**  
 Map Title  
 Figure 10.4  
 Zone of Theoretical Visibility (ZTV 3km) and Viewpoints  
 Scheme: 06, Appleby to Brough  
 Sheet 4 of 8

Map Number	Project	Originator	Volume	
HE565627	-	AMY	ELS	
S00	-	MP - LL	006075	
Suitability	Location	Type	Role	Number
S4	FIT FOR STAGE APPROVAL			P03





- Existing A66
- Order Limits
- Study Area 3km
- Viewpoint
- Viewpoint (Photomontage)
- Assessed View
- Public Rights of Way
- Areas Theoretically Visible from Existing A66 (HGV 4.7m) (2m DSM)
- Areas Theoretically Newly Visible from Scheme (HGV 4.7m) (2m DSM)



**national highways**

3 Piccadilly Place  
Manchester  
M1 3BN

P02	First Issue	PKELL	CESL	JSIM	AMIT	KWA
		17/03/22	17/03/22	17/03/22	20/04/22	20/04/22
Revision	Created	Checked	Reviewed	Approved	Authorised	

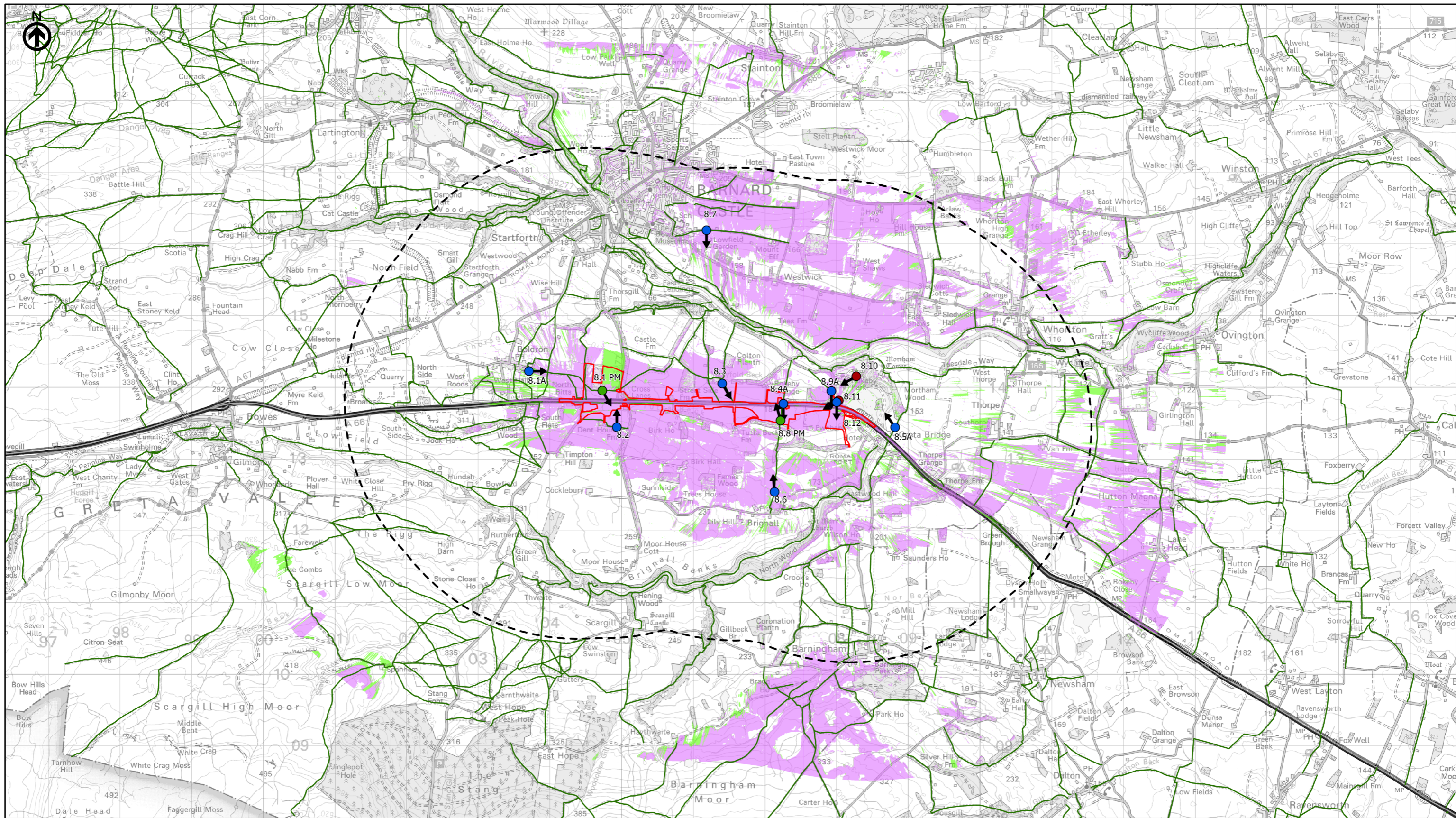
Kilometres

0 2 4

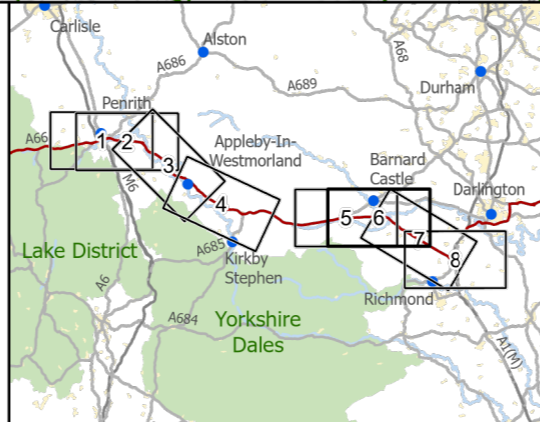
Scale @ A3: 1:50,000 | Project Ref No HE565627 | Stage: Stage 3  
© Crown copyright and database rights (2022). All rights reserved. OS 100030649.  
Contains public sector information licensed under the Open Government Licence v3.0.  
Digital Surface Model - ©Astrium Ltd and Bluesky International Ltd

Project Name <b>A66 Northern Trans-Pennine Project</b>			
Map Title Figure 10.4			
Zone of Theoretical Visibility (ZTV 3km) and Viewpoints			
Scheme: 07, Bowes Bypass			
Sheet 5 of 8			
Map Number Project	Originator	Volume	
HE565627	AMY	ELS	
S00	-	MP - LL	- 006076
Location	Type	Role	Number
Suitability S4	Suitability Description FIT FOR STAGE APPROVAL		Revision P02





- Existing A66
- Order Limits
- Study Area 3km
- Viewpoint
- Viewpoint (Photomontage)
- Assessed View
- Public Rights of Way
- Areas Theoretically Visible from Existing A66 (HGV 4.7m) (2m DSM)
- Areas Theoretically Newly Visible from Scheme (HGV 4.7m) (2m DSM)



**national highways**

3 Piccadilly Place  
Manchester  
M1 3BN

P02	First Issue				
	PKELL	CESL	JSIM	AMIT	KWHA
	17/03/22	17/03/22	17/03/22	20/04/22	20/04/22
Revision	Created	Checked	Reviewed	Approved	Authorised

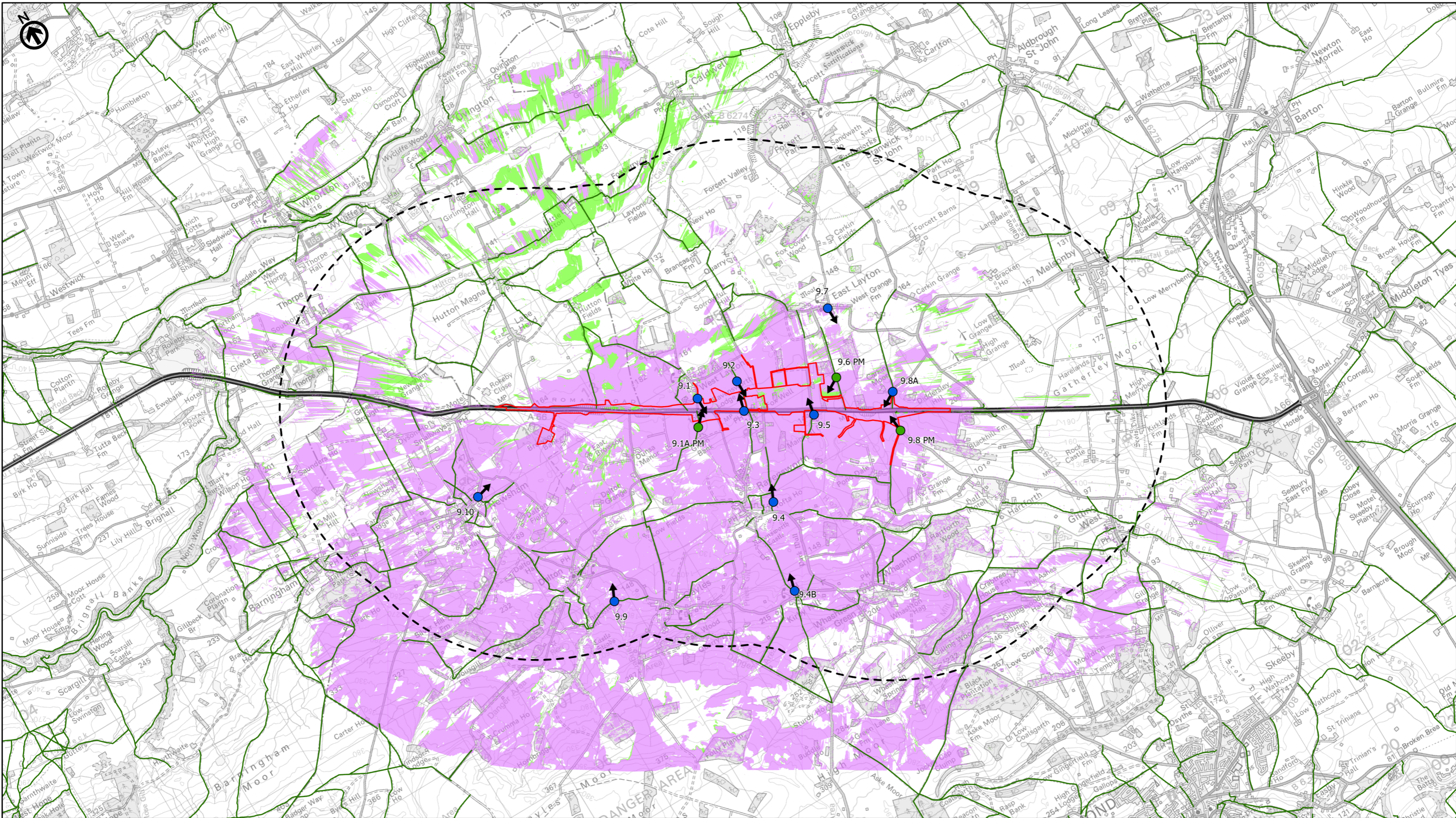
Kilometres

0 2 4

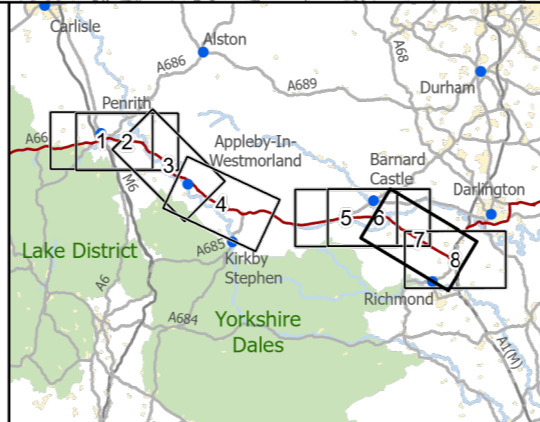
Scale @ A3: 1:50,000 | Project Ref No HE565627 | Stage: Stage 3  
 © Crown copyright and database rights (2022). All rights reserved. OS 100030649.  
 Contains public sector information licensed under the Open Government Licence v3.0.  
 Digital Surface Model - ©Astrium Ltd and Bluesky International Ltd

Project Name <b>A66 Northern Trans-Pennine Project</b>			
Map Title Figure 10.4			
Zone of Theoretical Visibility (ZTV 3km) and Viewpoints			
Scheme: 08, Cross Lanes to Rokeby			
Sheet 6 of 8			
Map Number	Project	Originator	Volume
HE565627	-	AMY	- ELS
S00		MP - LL - 006077	
Location		Type	Role   Number
Suitability	Suitability Description	Revision	
S4	FIT FOR STAGE APPROVAL	P02	





- Existing A66
- Order Limits
- Study Area 3km
- Viewpoint
- Viewpoint (Photomontage)
- Assessed View
- Public Rights of Way
- Areas Theoretically Visible from Existing A66 (HGV 4.7m) (2m DSM)
- Areas Theoretically Newly Visible from Scheme (HGV 4.7m) (2m DSM)



**national highways**

3 Piccadilly Place  
Manchester  
M1 3BN

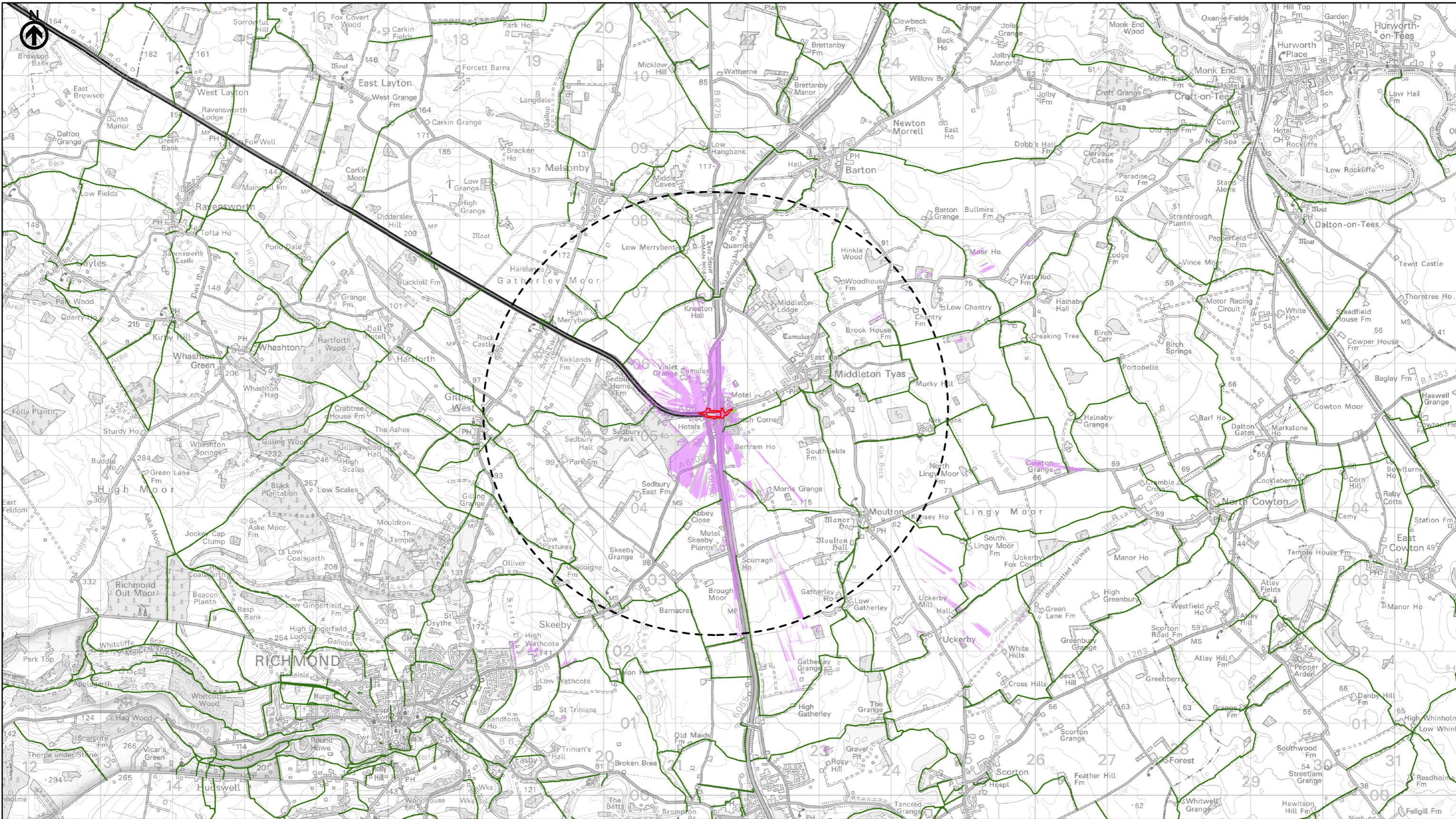
P02	First Issue	PKELL	CESL	JSIM	AMIT	KWHA
		17/03/22	17/03/22	17/03/22	20/04/22	20/04/22
Revision	Created	Checked	Reviewed	Approved	Authorised	

Kilometres

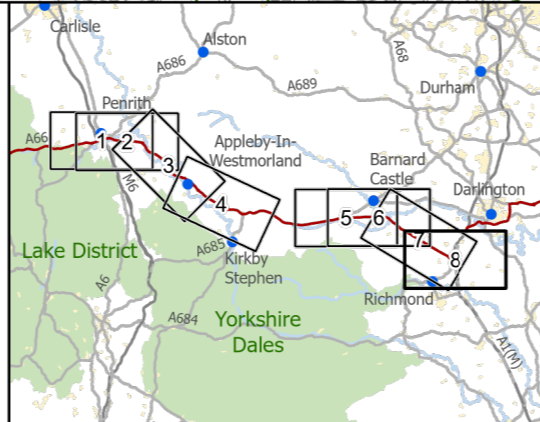
Scale @ A3: 1:50,000 | Project Ref No HE565627 | Stage: Stage 3  
 © Crown copyright and database rights (2022). All rights reserved. OS 100030649.  
 Contains public sector information licensed under the Open Government Licence v3.0.  
 Digital Surface Model - ©Astrium Ltd and Bluesky International Ltd

Project Name <b>A66 Northern Trans-Pennine Project</b>			
Map Title Figure 10.4			
Zone of Theoretical Visibility (ZTV 3km) and Viewpoints			
Scheme: 09, Stephen Bank to Carkin Moor			
Sheet 7 of 8			
Map Number	Project	Originator	Volume
HE565627	-	AMY	- ELS
S00	-	MP	- LL - 006078
Location	Type	Role	Number
Suitability S4	Suitability Description FIT FOR STAGE APPROVAL		Revision P02





- Existing A66
- Order Limits
- Study Area 3km
- Viewpoint
- Viewpoint (Photomontage)
- Assessed View
- Public Rights of Way
- Areas Theoretically Visible from Existing A66 (HGV 4.7m) (2m DSM)
- Areas Theoretically Newly Visible from Scheme (HGV 4.7m) (2m DSM)



**national highways**

3 Piccadilly Place  
Manchester  
M1 3BN

P02	First Issue	PKELL	CESL	JSIM	AMIT	KWHA
		17/03/22	17/03/22	17/03/22	20/04/22	20/04/22
Revision	Created	Checked	Reviewed	Approved	Authorised	

Kilometres

0 2 4

Scale @ A3: 1:50,000 | Project Ref No HE565627 | Stage: Stage 3  
© Crown copyright and database rights (2022). All rights reserved. OS 100030649.  
Contains public sector information licensed under the Open Government Licence v3.0.  
Digital Surface Model - ©Astrium Ltd and Bluesky International Ltd

Project Name <b>A66 Northern Trans-Pennine Project</b>			
Map Title Figure 10.4			
Zone of Theoretical Visibility (ZTV 3km) and Viewpoints			
Scheme: 11, A1(M) Junction 53 Scotch Corner			
Sheet 8 of 8			
Map Number Project	Originator	Volume	
HE565627	AMY	ELS	
S00	- MP - LL -	006079	
Location	Type	Role	Number
Suitability S4	Suitability Description FIT FOR STAGE APPROVAL		Revision P02